

English

Owner's Manual

CE



Persus L Dental Light
Code.: 300051224 Rev. 03

GNATUS 

INDEX

Product Description03

Warranty of the Equipment03

General Data04

Technical Specifications05

Symbols06

Dimensions07

Operation08

Maintenance08

Precautions09

Cleaning10

Troubleshooting10

Final Considerations10

DEAR CUSTOMER

Congratulations. You have made a good choice when you decided to buy a GNATUS QUALITY product comparable to the best products available in the World. This manual is a general presentation of your product and it will give you important details to help you to solve possible problems.

Please, read it and keep this with you.

PRODUCT DESCRIPTION

Dental light for dental use with gradual adjust of intensity 08.000 - 25.000 Lux through the foot control of the odontologic chair.

intensity, smooth movement, and standard ice color compatible with all environments.

Head made of resistant material, with a rotation of 620°, propitiating lightness, durability, and ample mobility in all positions. Activation through the foot control of the Dental Chair, optimizing biosafety.

Bilateral handle shaped grips enable isolation preventing the risk of cross contamination.

Multifaceted mirror with multicoating treatment, generating innumerable light sources, avoiding shadows created by interpositions. Mirror protector in a resistant, transparent material protecting against aerosols.

Arm in steel with vertical and horizontal movement with rounded edges, smooth paintwork for easy aseptic cleaning.

ISO 9001/2000 and ISO 13485/2003 Quality System, assuring the products are manufactured under standard procedures.

Products manufactured in agreement with RDC-59 - ANVISA (Sanitary Surveillance National Agency) with guarantees accomplishment to the sanitary legislation according to BPF (Good Manufacturing Procedures). In order to comply with directive 93/42/EEC for CE Mark purpose, it is defined that the life span of this product is estimated in 05 years provided that the enduser follows the requirements and instructions of this manual.

IMPORTANT: This equipment is for dental use only. It must be operated and utilized by specialized professional (certified professional, according to the legislation of the country) and following the instructions of the manual. The operation of the equipment required, for the professional, the utilization of correct instruments and it should to be in perfect conditions of the use, and to protect the professional, the patients and others, in the eventual danger situation.

- This equipment can't be used in the presence of inflammable anesthetics or products that may cause explosion.

- After finish life-cycle of the equipment, this equipment is throw way, so it should to be destroyed in appropriate area (according to the legislation of the country).

- To guarantee the safe functioning of your equipment, use only the assemble configurations (Dental Chair, Dental and Water Units and Dental Light) supplied by Gnatus authorized Dealers / Technical Assistance.

WARRANTY OF THE EQUIPMENT

This warranty covers product's manufacturing faults for the warranty period and standards specified on the Warranty Certificate. The Warranty Certificate is attached to product, and must be completed by the authorized Gnatus technician when equipment is installed.

Doubts and information: GNATUS Call center+ 55 (16) 2102-5000.

GENERAL DATA

Maintenance of the equipment

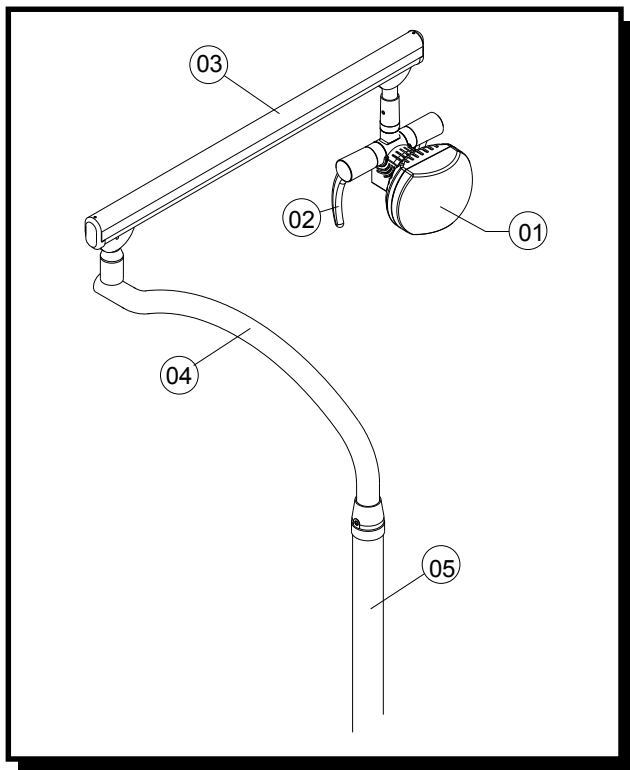
The equipment doesn't need preventive maintenance, however when there is any problem that this manual can't solve, ask for an authorized Gnatus technician.

List of pieces and circuit scheme

Gnatus Company declares that the supply of the circuit scheme, list of pieces or any other information that propitiate technical attendance for the user, can be request if there is an agreement between the user and Gnatus Company.

GENERAL DATA

Dental light Persus L



- 01 - Protector
- 02 - Handle
- 03 - Articulate arm
- 04 - Column arm
- 05 - Column

TECHNICAL SPECIFICATIONS

Dental light Persus L

- | | | |
|--|-----------------------------------|---|
| • Supply voltage
11V~ and 12V~ (from the Dental Chair) | • Net weight
11,50 Kg | • Lamp
H3 12V 55W |
| • Luminosity
08.000 / 25.000 LUX $\pm 20\%$ | • Gross weight
14,90 Kg | • Distance between the headstock and the operative field
70cm |

TECHNICAL SPECIFICATIONS

Special providence or particular conditions for installation

- Check the electric net, it must be compatible with the specified one in the equipment.
- Verify the thread earth, it must be turned off correctly.
- Verify the general key of the equipment in the position "0".


OBS: These information also make part of the Manual of Installation and Maintenance of the equipment that can be found with the authorized Gnatus technician.

Transport and storage conditions

The equipment must be transported and stored with the following observations:

- Carefully, should not suffer drop and neither receive impact.
- With the side of the arrow upward.
- With humidity protection, not to expose to rains, sparkling of water or humidified floor.
- With maximum piling up of 12 units for storage.

Content of acessible and non-accesible demarcations

GNATUS [®] GNATUS EQUIPAMENTOS MÉDICO-ODONTOLÓGICOS LTDA. Rod. Abrão Assed, Km 53+450m - Ribeirão Preto - SP - Brasil			
APARELHO	EQUIPMENT	APARATO	Nº REG. ANVISA:
Esta etiqueta não deve ser violada sob pena de perda da garantia. This label should not be removed under penalty of loss of warranty. Este rótulo no debe ser violado bajo penalidad de pérdida de la garantía.			

Product symbols



Warning - see the manual

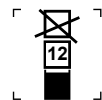


Warning



Landing (in many parts of the equipment) indicates the condition of being landed.

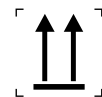
Packing symbols



Packing to be stored with a maximum stack of 12 units.



Packing to be transported and / or stored avoiding humidity, rains and wet floor.



Packing to be transported and / or stored with the harrows up.



The packing must be stored and transported away from direct sun light exposure.



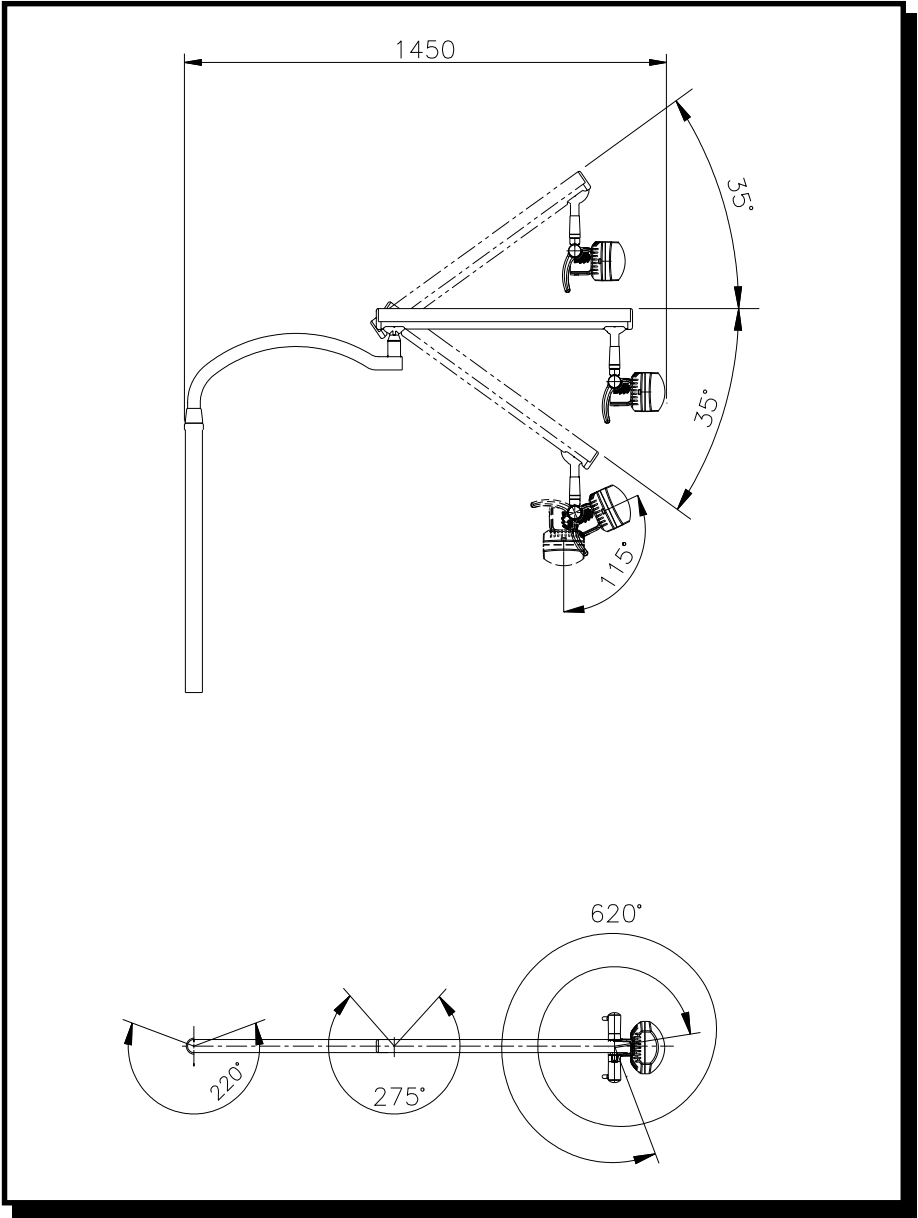
Packing to be transported and / or stored with care (should not suffer drop and neither receive impact).



Temperature limit for the packing to be stored or transported.

TECHNICAL SPECIFICATIONS

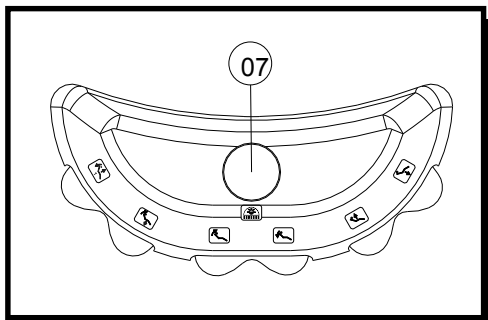
Dental light Persus L Dimension (mm)



OPERATION

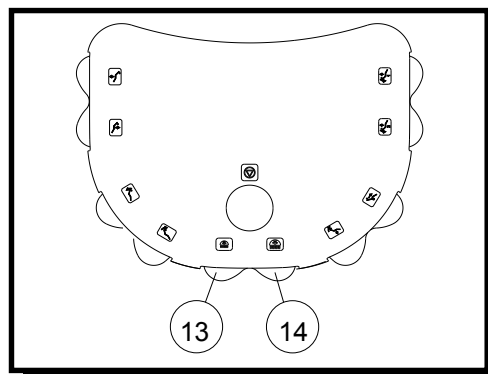
How to turn on the dental light (Foot control with 7 functions)

To turn-on the Dental Light, press the button (07). To modify the luminosity, keep it pressed. The luminosity will increase or diminish gradually of (08.000 - 25.000 lux). To turn-off, activate the button (07) again.



How to turn on the dental light (Foot control with 11 functions)

To turn-on the dental light in the maximum luminosity press the button (14). To turn it off, press this button again. To change the luminosity level press button (13) and keep it pressed. The luminosity will increase or diminish gradually, 8.000 lux to 25.000 lux. To turn it off press button (13) again.

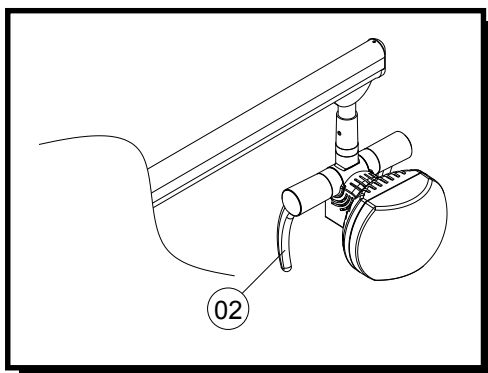


Movement of the headstock

The movement of the headstock is made through the knob (02), totally ergonomic designed to provide absolute isolation.

IMPORTANT:

Position the headstock 70cm of the operative field.



MAINTENANCE

Recommendations for the dental equipment maintenance.

Your Gnatus equipment has been designed and developed according to the standards of modern technology. Similarly to other kinds of equipment, it requires special care, which is many times neglected due to several reasons and circumstances.

Therefore, here are some important reminders for your daily routine. Try to follow these simple rules, which will save you a lot of time and will avoid unnecessary expenses once they start making part of your working procedure.

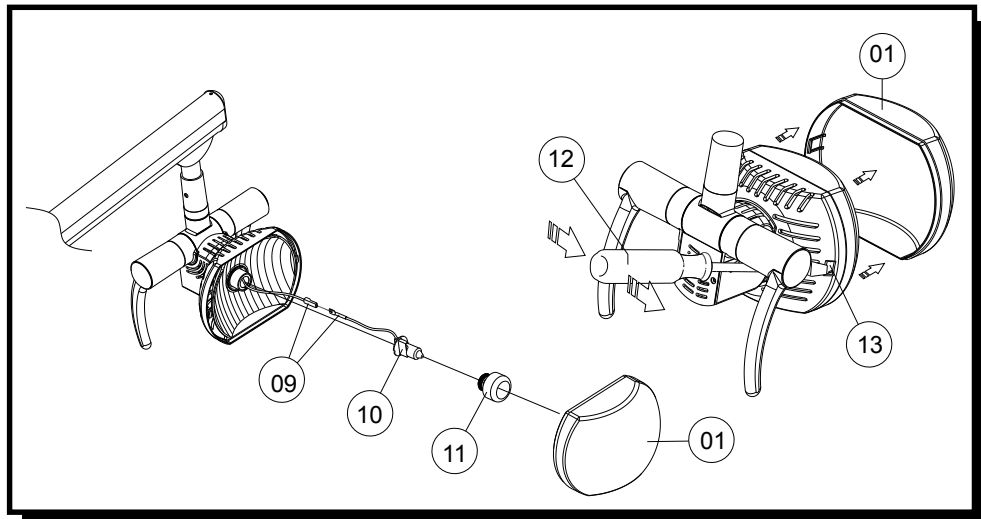
MAINTENANCE

Precautions



- Certify the correct voltage when you switch on your apparatus at the electricity.
- Install your apparatus on a proper place protected by solar rays and humidity.
- Whenever off duty turn off the main switch.

How to change the dental light



- Turn off the general key of the Syncrus dental chair or turn off the circuit breaker;
- Verify if the dental light is cold;
- Using a screwdriver (12) remove the protection (01) by softly releasing the latch (13) in the direction shown by the arrow (right).
- In an unclockwise job, remove the deflector (11) and pull the lamp out (10) with care, only till locate terminals (09);
- Only after that, disconnect the terminals and substitute the lamp.

ATTENTION:

Never touch the light bulb with the fingers. Use a handkerchief.

Cleansing of the protector

IMPORTANT: The cleansing of the light's protector (01), should only be done using a water-dampened flannel or cotton. Do not use chemicals of any sort, for it may stain the protector.

MAINTENANCE

Cleaning the equipment

To clean the equipment, we recommend the use of "BactSpray (Reg n° MS: 3.2079.0041.001-5) or any other similar product:

Active component: Benzalkonium chloride (tri-quaternary ammonium)
Solution 50%..... 0.329%

Chemical composition: Butyl Glycol, Decyl polyglucose, Sodium Benzoate, Sodium Nitrate, Essence, Deodorized Propane / Butane, demineralized Water.

For more information concerning cleaning procedures, see manufacturer's instructions.

WARNING:

- In order to prevent risks and damages to equipment, make sure that the liquid does not enter into the unit.
- The application of other solvent-based cleaning products or sodium hypochloride isn't recommended, because they may damage the equipment.



TROUBLESHOOTING

Troubleshooting:	Probable Causes	Solution:
- The Dental Light does not turn on.	- Power failure. - Burnt fuse of the dental chair. - Burnt lamp.	- Wait for power to return. - Replace the fuse of the dental chair. - Replace the lamp.

ATTENTION:

Any other problem that could happen with its equipment, should only be repaired by an authorized technician Gnatus.

The bad use, negligence or maintenance not made by technician authorized by the maker, will imply in the loss of the warranty.

FINAL CONSIDERATIONS

The most important aspect related to equipment care is that concerning spare parts.

To guarantee the life span of your equipment, use only **original Gnatus spare parts**. They are sure to follow the technical specifications and standards required by Gnatus.

We must also point out to you our chain of authorized dealers. Only dealers that make part of this chain will be able to keep your equipment constantly new for they count on technical assistants who have been trained and on specific tools for the correct maintenance of your equipment.

Doubts and information: GNATUS Call center (55-16) 2102-5000.

EC**REP**

Obelis S.A, Boulevard Général Wahis 53, 1030 Brussels, Belgium,
Tel: +(32) 2 732-59-54 Fax: +(32) 2 732-60-03 E-mail: mail@obelis.net

Nº Reg. ANVISA: FREE REGISTRATION BY HEALTH MINISTRY

CONHEÇA GET TO KNOW DESCUBRA

Peças de Mão Gnatus 32

As mais resistentes e
silenciosas do mercado.

Gnatus 32 Hand Pieces

The market's most resistant
and silent hand pieces.

Piezas de mano Gnatus 32

Las más resistentes y silenciosas
del mercado.

Manufacturer/ Distributor:

GNATUS

Technical Duties:

Gilberto Henrique Canesin Nomelini – CREA-SP: 0600891412



EQUIPAMENTOS MÉDICO-ODONTOLÓGICOS LTDA.

Rod. Abrão Assed , Km 53+450m - Cx. Postal 782

CEP 14097-500 - Ribeirão Preto - S.P. - Brasil

Fone (16) 2102-5000 - Fax (16) 2102-5001

C.N.P.J. 48.015.119/0001-64 - Insc. Est. 582.329.957.115

www.gnatus.com.br - gnatus@gnatus.com.br